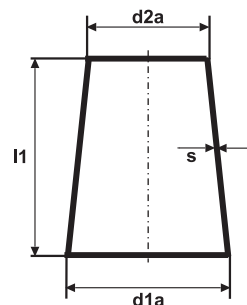


## Welded reducers / RKi concentric form

Welded concentric reducers made from sheet metal, rolled with 1-2 longitudinal welds.

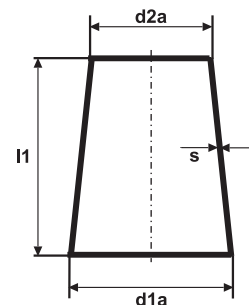
Overall lengths according to DIN 2616 without cylinder ends.



DN		length	available wall thickness s in mm / weight kg per item									
d1a	d2a	l1	1,5	2,0	2,5	3,0	4,0	5,0	6,0	8,0	10,0	12,0
21,3	17,2	38	0,03	0,04								
26,9	21,3	38	0,03	0,05	0,06							
	17,2		●	●	●							
33,7	26,9	50	0,06	0,07	0,08	0,10						
	21,3		●	●	●							
42,4	33,7	50	0,07	0,09	0,11	0,14						
	26,9		●	●	●	●						
	21,3		●	●	●							
48,3	42,4	64	0,12	0,15	0,20	0,26						
	33,7		●	●	●	●						
	26,9		●	●	●	●						
60,3	48,3	76	0,15	0,20	0,26	0,32	0,40	0,52				
	42,4		●	●	●	●	●	●				
	33,7		●	●	●	●						
	26,9		●	●	●	●						
76,1	60,3	90	0,23	0,30	0,39	0,48	0,64	0,78				
	48,3		●	●	●	●	●	●				
	42,4		●	●	●	●	●	●				
	33,7		●	●	●	●						
88,9	76,1	90	0,28	0,37	0,47	0,58	0,77	0,94				
	60,3		●	●	●	●	●	●				
	48,3		●	●	●	●	●	●				
	42,4		●	●	●	●	●	●				
114,3	88,9	100	0,42	0,55	0,71	0,88	1,17	1,42				
	76,1		●	●	●	●	●	●				
	60,3		●	●	●	●	●	●				
	48,3		●	●	●	●	●	●				
139,7	114,3	127		0,82	1,06	1,30	1,73	2,12	2,60			
	88,9		●	●	●	●	●					
	76,1		●	●	●	●	●					
	60,3		●	●	●	●	●					
168,3	139,7	140		1,08	1,42	1,74	2,31	2,89	3,48	4,62		
	114,3		●	●	●	●	●	●				
	88,9		●	●	●	●	●					
	76,1		●	●	●	●	●					
219,1	168,3	152		1,48	1,92	2,35	3,13	3,84	4,70	6,26	7,68	
	139,7		●	●	●	●	●	●	●			
	114,3		●	●	●	●	●	●				
	88,9		●	●	●	●	●					

ISO STANDARD

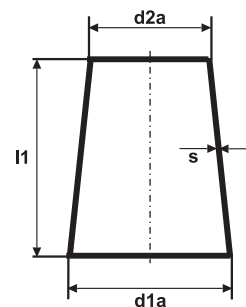
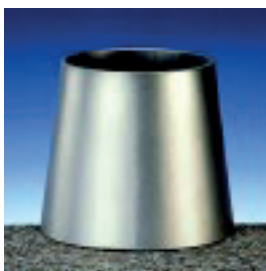
# Welded reducers / RKi concentric form



ISO STANDARD

DN		length	available wall thickness s in mm / weight kg per item									
d1a	d2a	l1	1,5	2,0	2,5	3,0	4,0	5,0	6,0	8,0	10,0	12,0
273,0	219,1	178		2,21	2,86	3,53	4,71	5,89	7,06	9,42	11,78	14,12
	168,3		●	●	●	●	●	●	●	●	●	
	139,7		●	●	●	●	●	●	●	●		
	114,3		●	●	●	●	●	●				
323,9	273,0	203			4,00	4,93	6,57	8,21	9,85	13,14	16,42	19,70
	219,1			●	●	●	●	●	●	●	●	●
	168,3			●	●	●	●	●	●	●	●	
	139,7			●	●	●	●	●	●	●		
355,6	323,9	330				8,45	11,27	14,09	16,91	22,54	28,18	33,82
	273,0			●	●	●	●	●	●	●	●	●
	219,1			●	●	●	●	●	●	●	●	●
	168,3			●	●	●	●	●	●	●	●	
406,4	355,6	355				10,22	13,63	17,04	20,44	27,26	34,08	40,88
	323,9			●	●	●	●	●	●	●	●	●
	273,0			●	●	●	●	●	●	●	●	●
	219,1			●	●	●	●	●	●	●	●	●
	168,3			●	●	●	●	●	●	●	●	●
457,0	406,4	381				12,40	16,53	20,66	24,80	28,93	41,12	49,60
	355,6			●	●	●	●	●	●	●	●	●
	323,9			●	●	●	●	●	●	●	●	●
	273,0			●	●	●	●	●	●	●	●	●
	219,1			●	●	●	●	●	●	●	●	●
508,0	457,0	508				18,47	24,63	30,79	36,95	49,27	61,58	73,90
	406,4			●	●	●	●	●	●	●	●	●
	355,6			●	●	●	●	●	●	●	●	●
	323,9			●	●	●	●	●	●	●	●	●
	273,0			●	●	●	●	●	●	●	●	●
	219,1			●	●	●	●	●	●	●	●	●
610,0	508,0	508				21,39	28,52	35,65	42,78	57,05	71,31	85,57
	457,0			●	●	●	●	●	●	●	●	●
	406,4			●	●	●	●	●	●	●	●	●
	355,6			●	●	●	●	●	●	●	●	●
	323,9			●	●	●	●	●	●	●	●	●
	273,0			●	●	●	●	●	●	●	●	●
711,0	610,0	610				30,36	40,48	50,60	60,72	80,96	101,19	121,43
	508,0			●	●	●	●	●	●	●	●	●
	457,0			●	●	●	●	●	●	●	●	●
	406,4			●	●	●	●	●	●	●	●	●
	355,6			●	●	●	●	●	●	●	●	●
	323,9			●	●	●	●	●	●	●	●	●

## Welded reducers / RKi concentric form

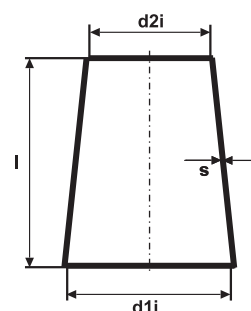
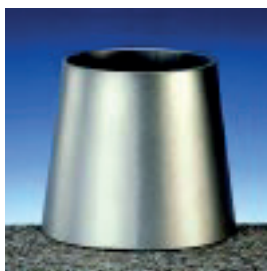


DN		length	available wall thickness s in mm / weight kg per item									
d1a	d2a	l1	1,5	2,0	2,5	3,0	4,0	5,0	6,0	8,0	10,0	12,0
813,0	711,0	610				35,02	46,71	58,38	70,06	93,41	116,76	140,11
	610,0		•	•	•	•	•	•	•			
	508,0		•	•	•	•	•	•	•			
	457,0		•	•	•	•	•	•	•			
	406,4		•	•	•	•	•	•	•			
	355,6		•	•	•	•	•	•	•			
914,0	813,0	610				39,70	52,93	66,17	79,40	105,86	132,33	158,79
	711,0		•	•	•	•	•	•	•			
	610,0		•	•	•	•	•	•	•			
	508,0		•	•	•	•	•	•	•			
	457,0		•	•	•	•	•	•	•			
	406,4		•	•	•	•	•	•	•			
1016,0	914,0	610				44,38	59,17	73,96	88,75	118,34	147,92	177,50
	813,0		•	•	•	•	•	•	•			
	711,0		•	•	•	•	•	•	•			
	610,0		•	•	•	•	•	•	•			
	508,0		•	•	•	•	•	•	•			
	457,0		•	•	•	•	•	•	•			
1220,0	1016,0	711				52,50	70,00	87,50	105,00	140,00	175,00	210,00
	914,0		•	•	•	•	•	•	•			
	813,0		•	•	•	•	•	•	•			
	711,0		•	•	•	•	•	•	•			
	610,0		•	•	•	•	•	•	•			

ISO STANDARD

## Welded reducers concentric form / RKz

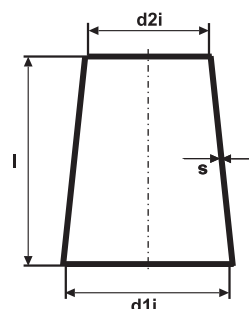
Welded concentric reducers made from sheet metal, rolled with 1-2 longitudinal welds..  
Overall lengths  $l = 3 \times (d1i - d2i)$ ,  
without cylinder ends.



DN		length	available wall thickness s in mm / weight kg per item						
d1i	d2i	l	1,5	2,0	2,5	3,0	4,0	5,0	6,0
40	32	24	0,03	0,04					
	25	45	0,05	0,08					
50	40	30	0,05	0,06					
	32	54	0,08	0,12					
50	25	75	0,12	0,16					
	50	45	0,10	0,13	0,16				
65	40	75	0,17	0,22	0,28				
	32	99	0,22	0,29	0,36				
80	65	45	0,12	0,16	0,20	0,24			
	50	90	0,24	0,32	0,40	0,48			
80	40	120	0,32	0,43	0,54	0,64			
	80	60	0,20	0,26	0,33	0,40			
100	65	105	0,35	0,46	0,58	0,70			
	50	150	0,50	0,66	0,83	1,00			
125	100	75	0,29	0,38	0,48	0,57	0,76		
	80	135	0,51	0,68	0,85	1,02			
125	65	180	0,68	0,90	1,13	1,35			
	50	225	0,85	1,13	1,41	1,70			
150	125	75	0,32	0,42	0,53	0,63	0,84		
	100	150	0,64	0,84	1,06	1,26	1,68		
150	80	210	0,89	1,18	1,48	1,77	2,36		
	65	255	1,08	1,44	1,80	2,16	2,88		
200	150	150		1,18	1,48	1,77	2,36	2,95	
	125	225		1,78	2,22	2,67	3,56	4,45	
200	100	300		2,37	2,96	3,55	4,74		
	80	360		2,84	3,55	4,26	5,68		
250	200	150		1,45	1,81	2,18	2,90	3,62	
	150	300		2,89	3,61	4,33	5,78	7,22	
250	125	375		3,61	4,51	5,41	7,22	9,02	
	100	450		4,34	5,42	6,51	8,68		
300	250	150		1,64	2,05	2,46	3,28	4,10	
	200	300		3,27	4,09	4,90	6,54	8,17	
300	150	450		4,90	6,12	7,35	9,80	12,25	
	125	525		5,73	7,16	8,60	11,46	14,32	

FOR PIPE AND PAPER

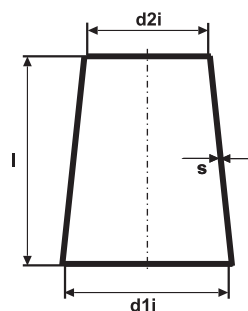
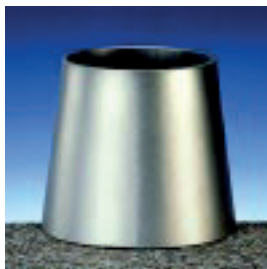
## Welded reducers concentric form / RKz



FOR PIPE AND PAPER

DN		length	available wall thickness s in mm / weight kg per item						
d1i	d2i	l	1,5	2,0	2,5	3,0	4,0	5,0	6,0
350	300	150			2,54	3,05	4,07	5,08	6,10
	250	300			5,08	6,10	8,13	10,16	
	200	450			7,62	9,15	12,20	15,25	
	150	600			10,16	12,20	16,26	20,30	
400	350	150				3,63	4,84	6,05	7,25
	300	300				7,25	9,65	12,00	14,50
	250	450				10,88	14,50	18,00	21,50
	200	600				14,50	19,50	24,00	29,00
450	400	150				4,10	5,50	7,00	8,50
	350	300				8,25	11,00	14,00	16,50
	300	450				12,50	16,50	21,00	25,00
	250	600				16,50	22,00	27,50	33,00
	200	750				20,50	27,50	34,00	41,00
500	450	150				4,70	6,30	8,00	9,50
	400	300				9,50	12,50	16,00	19,00
	350	450				14,00	18,50	23,50	28,00
	300	600				19,00	25,50	31,50	38,00
	250	750				23,50	31,50	39,00	47,00
600	500	300				10,50	14,00	17,50	21,00
	450	450				15,50	20,50	26,00	31,00
	400	600				20,50	27,50	34,00	41,00
	350	750				29,50	34,00	42,50	51,00
	300	900				31,00	41,50	51,50	62,00
700	600	300				12,50	16,50	21,00	25,00
	500	600				25,00	33,50	41,50	50,00
	450	750				31,50	42,00	52,50	63,00
	400	900				38,00	50,50	63,50	76,00
	350	1050				44,00	58,50	73,50	88,00
800	700	300				15,00	20,00	25,00	30,00
	600	600				30,00	40,00	50,00	60,00
	500	900				45,00	60,00	75,00	90,00
	450	1050				52,50	70,00	87,50	105,00
	400	1200				60,00	80,00	100,00	120,00
900	800	300				17,00	23,00	29,00	34,50
	700	600				34,50	46,00	57,50	69,00
	600	900				52,00	69,00	86,00	104,00
	500	1200				69,00	92,00	115,00	138,00
	450	1350				77,00	103,00	129,00	155,00

## Welded reducers concentric form / RKz



DN		length	available wall thickness s in mm / weight kg per item						
d1i	d2i	l	1,5	2,0	2,5	3,0	4,0	5,0	6,0
1000	900	300				19,50	26,00	32,50	39,00
	800	600				39,50	52,00	69,00	78,00
	700	900				58,50	78,00	97,50	117,00
	600	1200				78,00	104,00	130,00	156,00
	500	1500				97,50	130,00	162,50	195,00
1200	1000	600				46,00	61,00	76,00	91,50
	900	900				69,00	92,00	115,00	138,00
	800	1200				91,50	122,00	152,50	183,00
	700	1500				115,00	153,00	191,00	230,00
	600	1800				138,00	184,00	230,00	276,00

FOR PIPE AND PAPER